



Haws nøddusj, modell 8123 V Axion

Best. nr: 8123V

Anslutning: DN 25 – 1" RG

Vannmengde: 77 l/min.

Dusjhode og drahåndtak i rustfritt stål.

AXION msr – unikt kroppsdushode

Rør i varmgalvanisert stål.

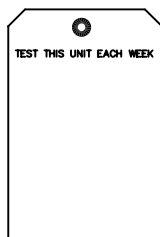
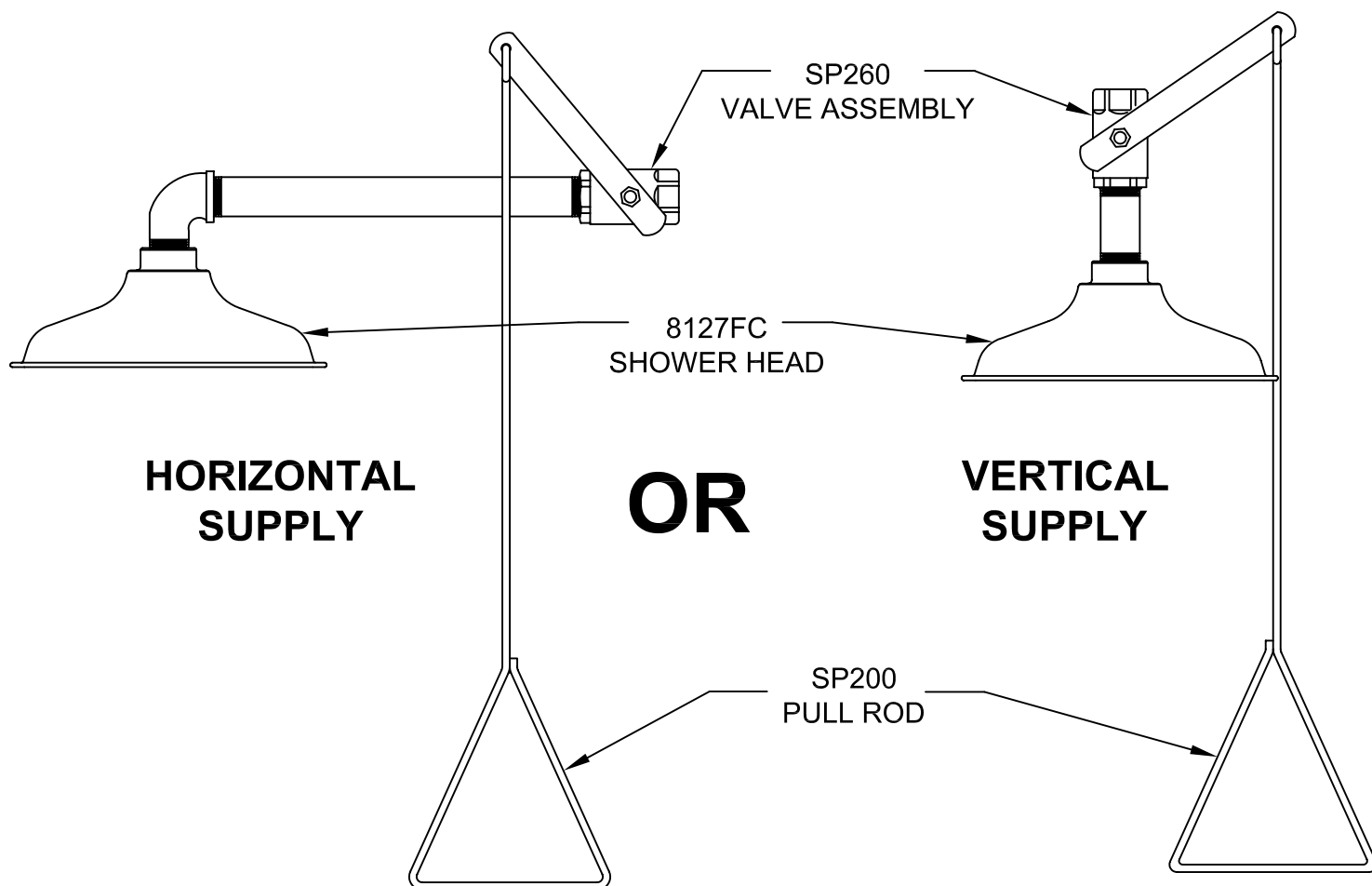
Automatisk trykk- og mengderegulering.

Vi anbefaler bruk av temperert vann til kroppsdushj,

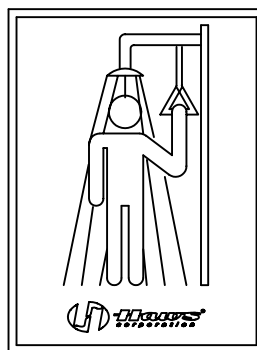
Sikkerhetsblander: Modell 9201E



PARTS BREAKDOWN



SP170
TEST TAG



SP177
SHOWER SIGN

REV	DESCRIPTION	ECN	DATE	BY/APVD
12	UPDATED PER ECN	4367	12/3/09	IR
REVISIONS				

**WHEN ORDERING
PARTS PLEASE
SPECIFY YOUR
MODEL NUMBER**

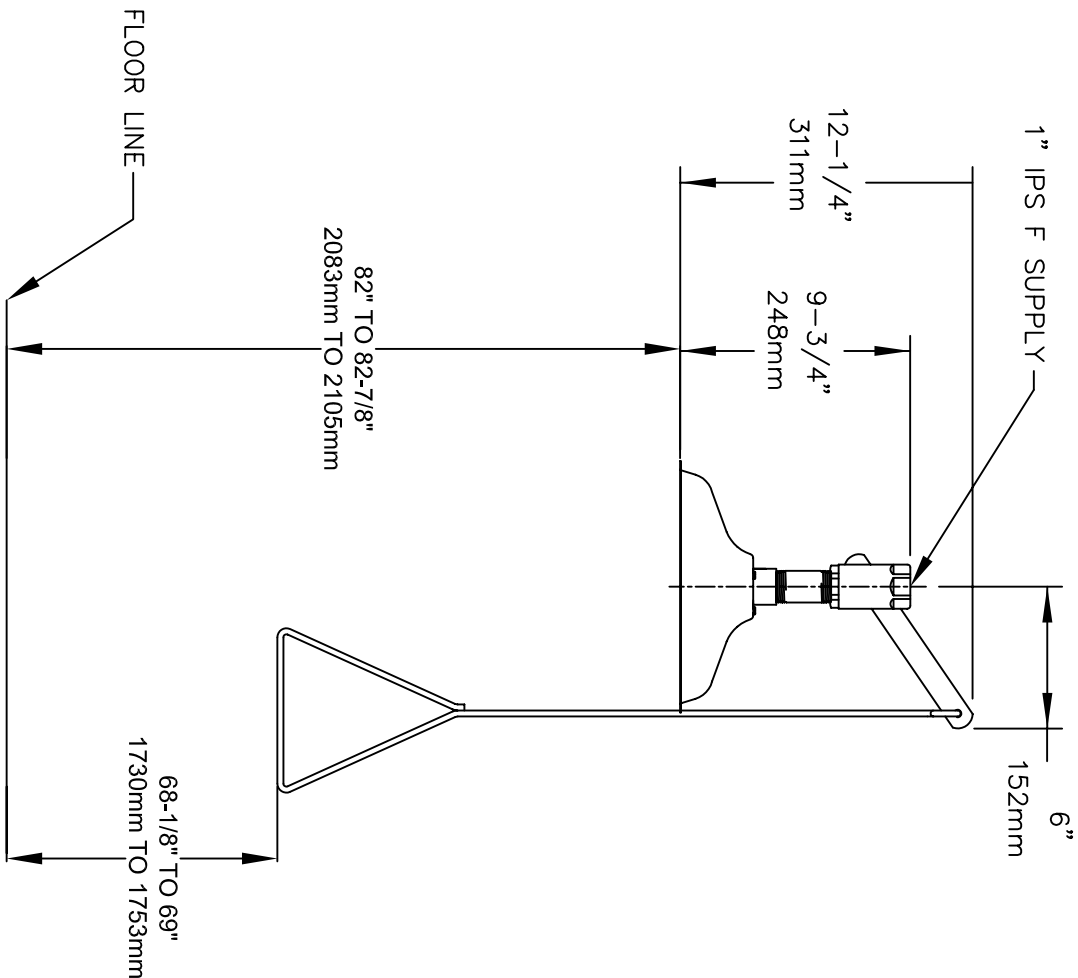
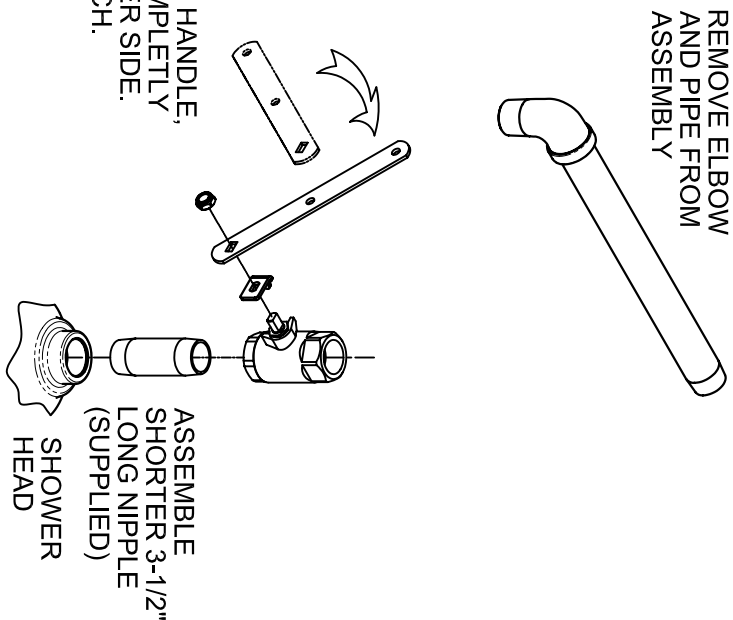


Haws
corporation

1455 KLEPPE LANE
SPARKS, NEVADA 89431
(775) 359-4712 FAX (775) 359-7424
E-MAIL: HAWS@HAWS.CO.COM
WEBSITE: WWW.HAWS.CO.COM

DRAWN BY:	DATE: 03/08/93	CHECK BY:	APPRD BY:	SCALE: 1/3
TITLE: MODEL 8123 EMERGENCY SHOWER				PART NUMBER: 0002080120
DRAWING TYPE: PARTS BREAKDOWN				DRAWING NUMBER: 11475C00
				REV. 12

FOR VERTICAL SUPPLY (RECONFIGURE AS SHOWN)



NOTES:

1. TO COMPLY WITH ANSI Z358.1-2009 FOR EMERGENCY SHOWER EQUIPMENT:
 - UNIT SHALL BE INSTALLED IN ACCORDANCE WITH MANUFACTURER'S INSTRUCTIONS AND ACCEPTABLE PLUMBING PRACTICES.
 - SHOWER SHALL BE POSITIONED SO THAT SHOWER HEAD IS NOT LESS THAN 208.3 CM (82 IN.) NOR MORE THAN 243.8 CM (96 IN.) FROM SURFACE ON WHICH USER STANDS.
 - SHOWER SPRAY PATTERN SHALL HAVE A MINIMUM DIAMETER OF 50.8 CM (20 IN.) AT 152.4 CM (60 IN.) ABOVE SURFACE ON WHICH USER STANDS, AND CENTER OF SPRAY PATTERN SHALL BE LOCATED AT LEAST 40.6 CM (16 IN.) FROM ANY OBSTRUCTION.
2. DIMENSIONS MAY VARY ±1/2" [12.7mm].



1455 KLEPPE LANE
SPARKS, NEVADA 89431
(775) 359-4712 FAX (775) 359-7424
E-MAIL: HAWS@HAWS.CO.COM
WEBSITE: WWW.HAWS.CO.COM

ECN NO. 1-2009-001	DATE: 8/1/09	MODEL(S): 8123	DATE: 8/1/09	INFO FAX DOC #: 281234	DATE: 8/1/09	INSTALLATION/FAXBACK	DATE: 8/1/09
ECN: 4367	IR: 5/4/91	CHG: 8123	CHG: 8123	INFO FAX DOC #: 281234	DATE: 8/1/09	INSTALLATION/FAXBACK	DATE: 8/1/09
APPROVED: TIF	DATE: 5/4/91	MODEL(S): 8123	DATE: 8/1/09	INFO FAX DOC #: 281234	DATE: 8/1/09	INSTALLATION/FAXBACK	DATE: 8/1/09
ECN: 4367	IR: 5/4/91	CHG: 8123	CHG: 8123	INFO FAX DOC #: 281234	DATE: 8/1/09	INSTALLATION/FAXBACK	DATE: 8/1/09